

1. Use a craft knife to carefully cut out both sections. Cut slits along the dashed white lines.

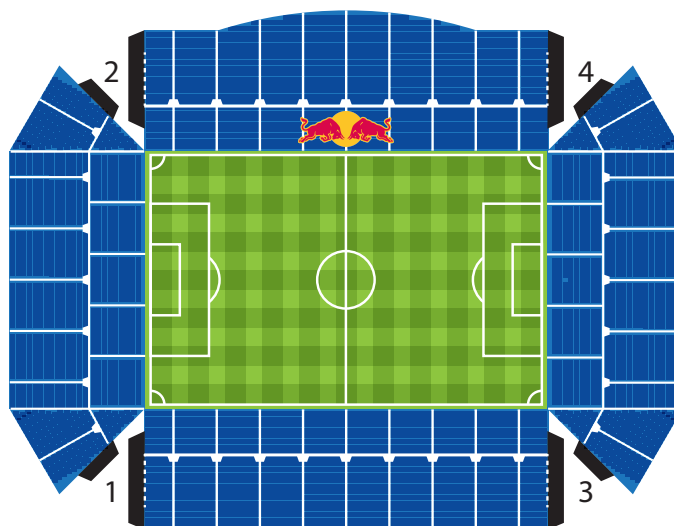
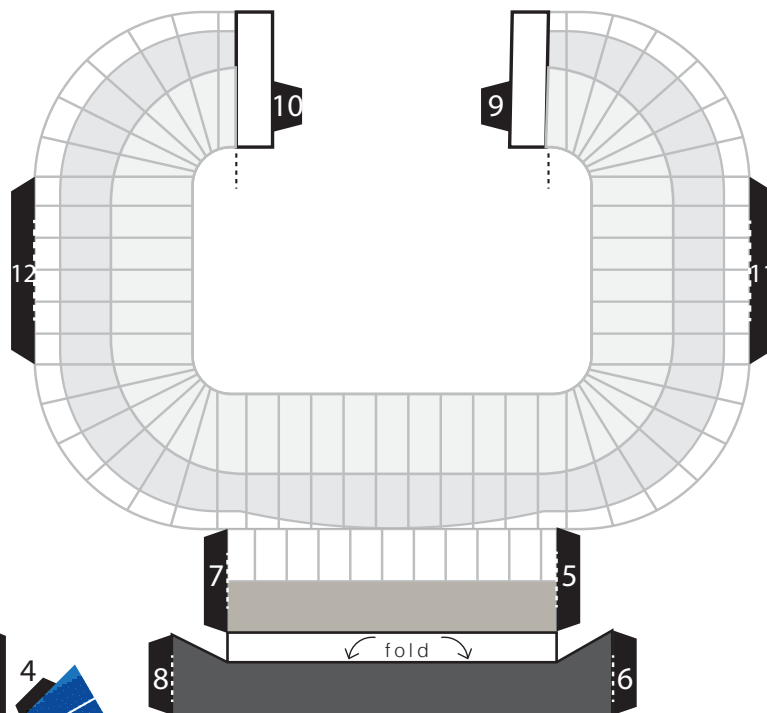
2. Assemble each section individually by folding along the lines and inserting the numbered black tabs into their corresponding slots.

3. Attach the two sections by inserting tabs 9 and 10 into their corresponding slots.

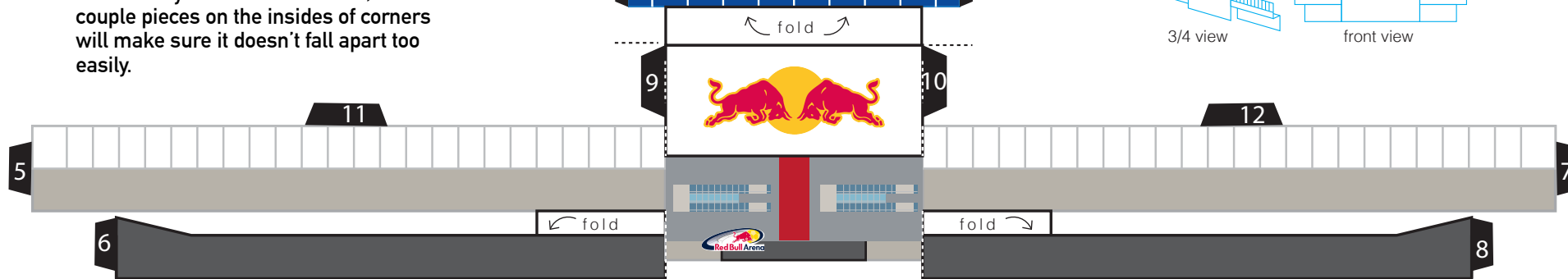
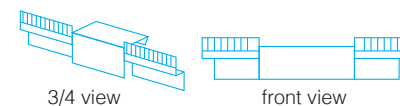
Tips: Using heavier paper will make the stadium easier to build and more solid. Card stock is ideal.

Be sure not to cut directly on a desk or table. Use a piece of cardboard or the back of a magazine to make sure you don't damage your tabletop.

You don't need any tape to construct the stadium, but if you plan to keep it around on your desk for a while, a couple pieces on the insides of corners will make sure it doesn't fall apart too easily.



bottom dark gray strip will be folded back behind light gray strip like so:



cut along dashed lines